

Business Insight and Data

23rd March 2023



**NORTH YORKSHIRE
FIRE & RESCUE SERVICE**

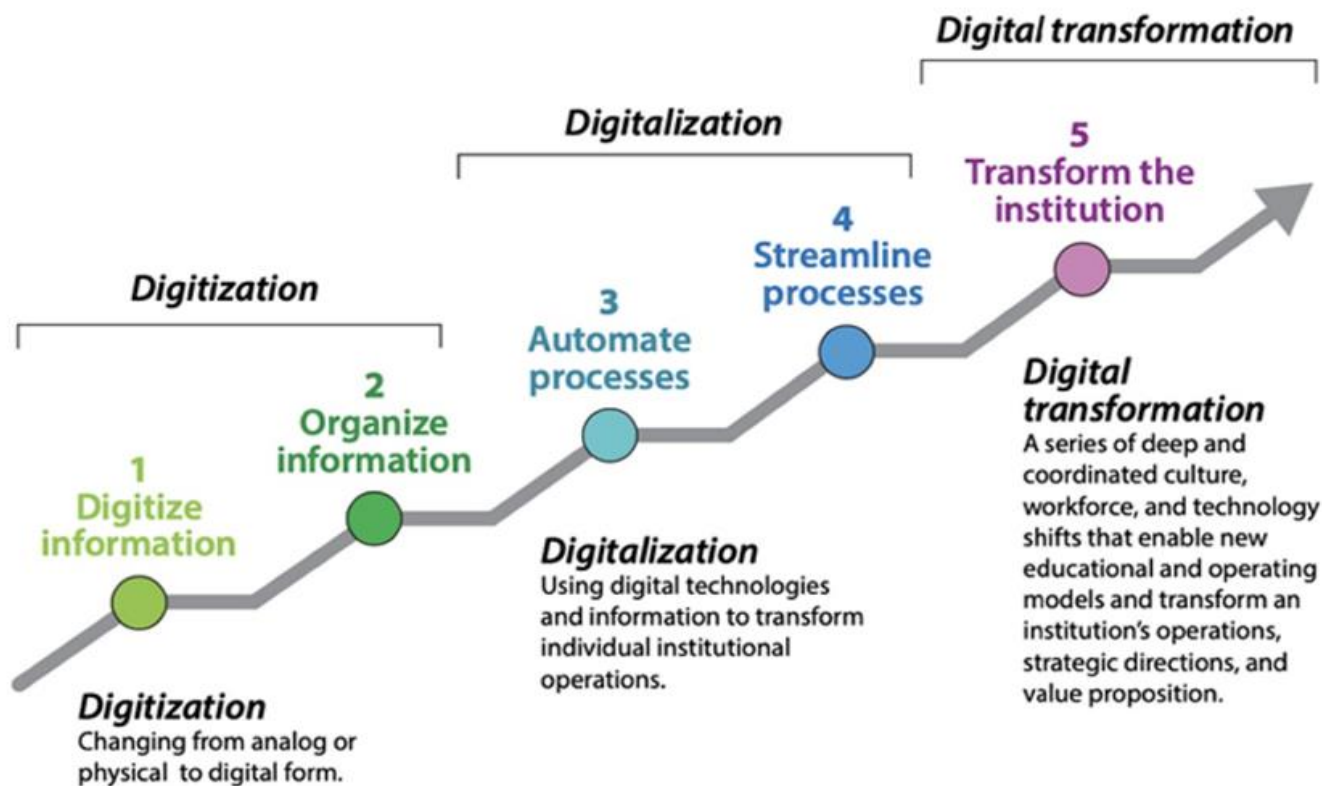


www.northyorksfire.gov.uk

Becoming a data-led service



**NORTH YORKSHIRE
FIRE & RESCUE SERVICE**



Digital Transformation



**NORTH YORKSHIRE
FIRE & RESCUE SERVICE**

Digital transformation requires us to re-examine how we do things, how we operate, how we behave; working out what can be done better and what can be changed to improve the outcomes that we want to see for our workforce and the wider public



The Current Position



**NORTH YORKSHIRE
FIRE & RESCUE SERVICE**



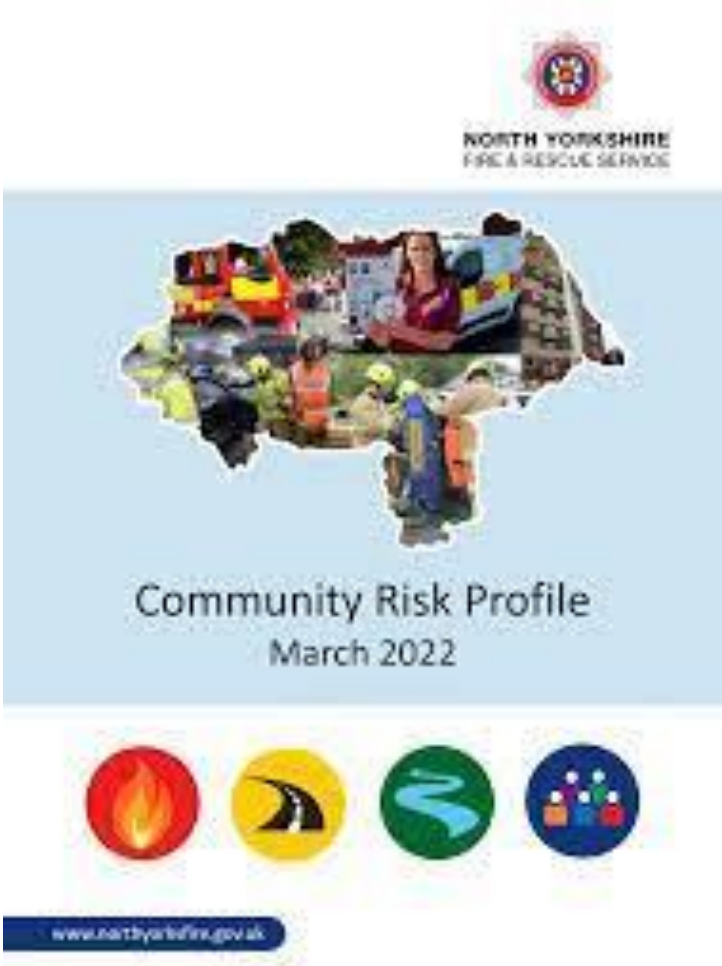
Within our last report we had several comments referring to our data and performance management

www.northyorksfire.gov.uk

Community Risk Profile



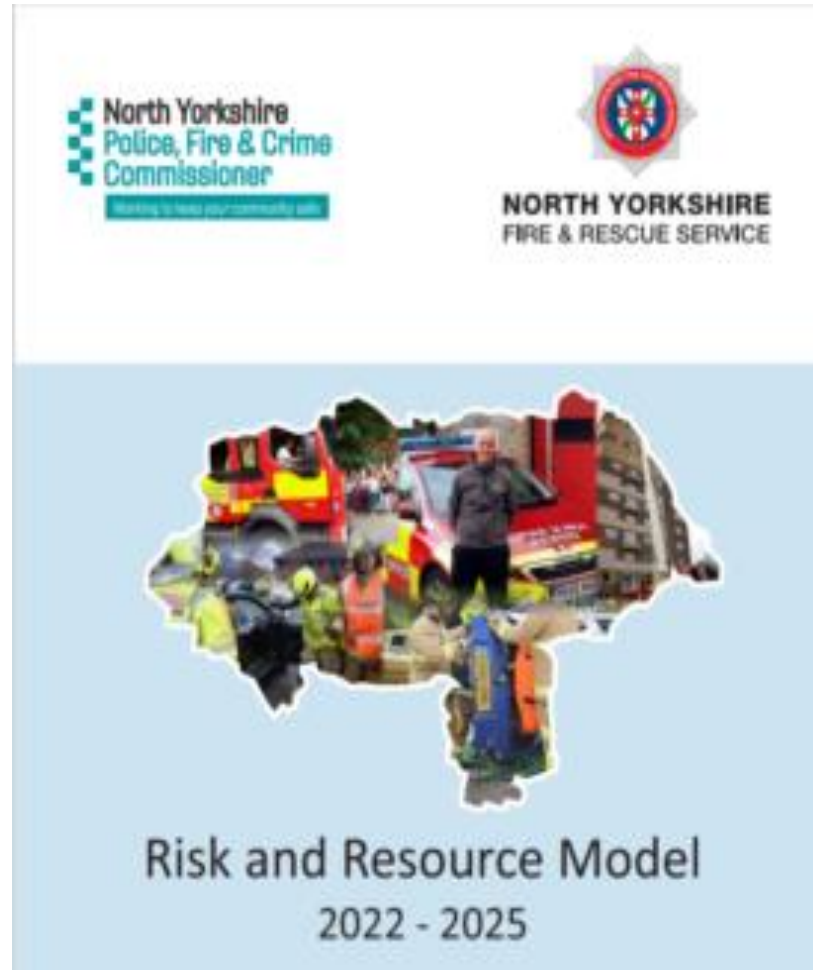
**NORTH YORKSHIRE
FIRE & RESCUE SERVICE**



Risk and Resource Model (RRM)



**NORTH YORKSHIRE
FIRE & RESCUE SERVICE**



Performance management and Scrutiny



**NORTH YORKSHIRE
FIRE & RESCUE SERVICE**

- We have access to performance data which is reviewed at service delivery, senior leadership team and public accountability meetings



Assurance Strategy



**NORTH YORKSHIRE
FIRE & RESCUE SERVICE**

- Our upcoming assurance strategy which will focus upon providing assurance through data and metrics
- We will endeavour to make performance data easy to understand, clear and informative
- Further assurance will be provided through “reality checks” and qualitative reports
- We will look to benchmark our performance against recognised standards and sector best practice

Using data to tell our story



**NORTH YORKSHIRE
FIRE & RESCUE SERVICE**

Data literacy is key to ensuring our local context is explained accurately



Performance vs Experience



**NORTH YORKSHIRE
FIRE & RESCUE SERVICE**

Data and digital solutions do not only promote greater emphasis on performance but can enhance the experience of end users



Looking Forward



**NORTH YORKSHIRE
FIRE & RESCUE SERVICE**

The solutions we provide need to “start with the end in mind”



www.northyorksfire.gov.uk