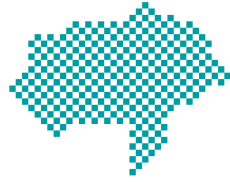


Police and Crime
Commissioner
North Yorkshire



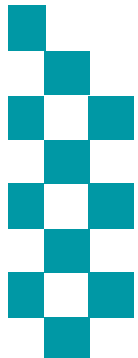
Corporate Performance & Scrutiny Group



Meeting: 28 June 2016

Reporting Period: April – May 2016

NB: Statistics remain provisional and subject to change





INTRODUCTION



Reporting Period: Apr – May 2016

Contents:

- The Results: Current Performance levels
 1. Headline overview statistics
 2. Crimes & ASB statistics (including stats by District council area)
 3. Road Traffic Collision casualties
- The People: HR/headcount information

Recommendations:

- The Group notes the contents and current position

Actions arising from this meeting in response to scrutiny:

-

Glossary of Terms

- Please see final page in document

Time Periods

- Unless indicated otherwise statistics are presented by financial year

Performance Monitoring/Management and Operational Priorities

- At a strategic level this meeting (The Corporate Performance & Scrutiny Group) and Executive Board consider performance in the broader context of financial and people data and consider progress against the delivery of the Police and Crime Plan
- The force runs its Tactical Tasking & Co-ordination Group (TTCG) meeting on a 3 month cycle rather than monthly. This meeting looks predicted operational matters some 3 to 6 months in the future. Local TTCG meetings also run quarterly
- The Performance Steering Group now sits with the Operational Delivery Board meeting which also monitors progress against business plans and activity around HMIC inspections

EXECUTIVE SUMMARY

May 2016 Dashboard

Total Crime Recorded

Victim Based Crimes recorded

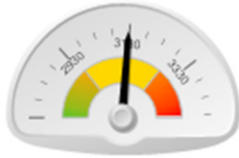
Anti-Social Behaviour Incidents Reported

Killed Seriously Injured Casualties

% Victims Satisfied

% public w ho believe NYP/Councils deal w ith Crime & ASB

% public w ho are Confident in NYP



2016/17	6141	2016/17	5500	2016/17	5191	2016	128	2016	83.7%	2015	68.8%	2015	83.9%
v 15/16	0.8%	v 15/16	0.3%	v 15/16	1.1%	v 2015	-3.8%	v 2014	-0.8%	v 2014	1.4%	v 2014	3.6%
v 14/15	5.1%	v 14/15	6.9%	v 14/15	-0.2%	v 2014	-11.7%	v 2013	-4.3%	v 2013	3.4%	v 2013	7.1%

Summarised commentary on current trends

Crime & ASB

- NYP has one of the lowest crime rates per 1000 population in England
- Victim Based Crime levels are all within normal range .
- ASB is in line with last year

Killed Seriously Injured (KSI) casualties

- Long term downward trend. Provisional figures show a reduction in KSIs.

Satisfaction

- Satisfaction remains high with more than 8 in 10 victims satisfied with service. The satisfaction levels for victims of auto crime show continued small improvements are being made. NYP acknowledges there is still more work to do in this area.

Public Confidence

- The latest data released in April 2016 shows 83.9% of the public are confident in NYP and 70.1% believe NYP do a good or excellent job
- The next round of **Performance Conferences** have been rescheduled for June and July. They were pushed back by one month to accommodate the recent HMIC PEEL inspection and Chief Officer Team moves following Chief Constable Dave Jones and T/ACC Ken McIntosh temporary move to South Yorkshire

DEMAND v PREVIOUS YEARS VOLUME CHANGE

RECORDED CRIME STATISTICS		2014/15	2015/16	2016/17	Diff 16/17 v 15/16		Diff 16/17 v 14/15		Trend
Victim Based	Arson & Criminal Damage	894	989	946	-43	-4.3%	52	5.8%	
	Burglary: Burglary Dwelling	232	248	226	-22	-8.9%	-6	-2.6%	
	Burglary: Burglary Non Dwelling	439	465	336	-129	-27.7%	-103	-23.5%	
	Robbery	15	21	20	-1	-4.8%	5	33.3%	
	Sexual Offences: Other	111	139	163	24	17.3%	52	46.8%	
	Sexual Offences: Rape	53	58	65	7	12.1%	12	22.6%	
	Theft: All Other Theft	865	819	760	-59	-7.2%	-105	-12.1%	
	Theft: Bicycle Theft	243	211	267	56	26.5%	24	9.9%	
	Theft: Shoplifting	693	701	697	-4	-0.6%	4	0.6%	
	Theft: Theft From Person	82	70	62	-8	-11.4%	-20	-24.4%	
	Vehicle Offences	379	393	397	4	1.0%	18	4.7%	
	Violence: Violence With Injury	625	764	757	-7	-0.9%	132	21.1%	
	Violence: Violence Without Injury	513	603	804	201	33.3%	291	56.7%	
	Total	5144	5481	5500	19	0.3%	356	6.9%	
Crimes Against Society	Drugs: Possession Of Drugs	329	253	227	-26	-10.3%	-102	-31.0%	
	Drugs: Trafficking Of Drugs	47	44	65	21	47.7%	18	38.3%	
	Misc Crimes Against Society	73	70	120	50	71.4%	47	64.4%	
	Possession Of Weapons	47	25	27	2	8.0%	-20	-42.6%	
	Public Order Offences	205	221	202	-19	-8.6%	-3	-1.5%	
	Total	701	613	641	28	4.6%	-60	-8.6%	
Total	5845	6094	6141	47	0.8%	296	5.1%		

Slide Summary

This slide shows **volume change** across the last 3 years.

NB: The volumes shown are for April and May only

Victim Based Crime

- is in line with last year

Anti-Social Behaviour

- is in line with previous years

Public Safety & Welfare

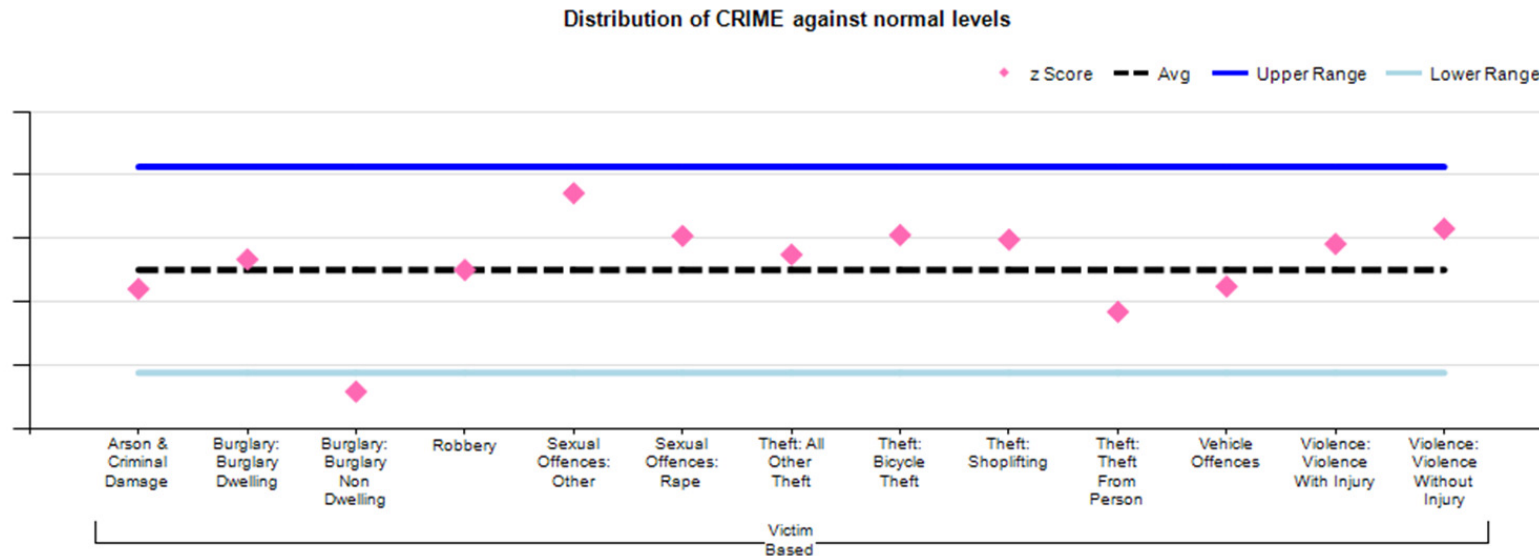
- is up on last two years – this is linked to the recording of Safeguarding and Info sharing data as a PSW incident .

NON CRIME STATISTICS		2014/15	2015/16	2016/17	Diff 16/17 v 15/16		Diff 16/17 v 14/15		Trend
ASB	Total	5202	5135	5191	56	1.1%	-11	-0.2%	
PSW	Total	12381	12628	13173	545	4.3%	792	6.4%	

NOT PROTECTIVELY MARKED

FORCEWIDE EXCEPTION BANDING: VICTIM BASED CRIME

◆ Represents Crime levels recorded in the last month , Data is normalised to allow crime groups with different volumes (e.g. robbery and criminal damage) to be presented on same graph. Crime levels can be described as normal if they fall between the blue lines with movement in this range likely to be random fluctuations.



Although the previous slide details some volume changes in crime levels over the current financial year to date all of the crime levels remain within tolerance. The statistical data and the complex underlying issues are considered in more detail at the monthly force Operations Board and in the Performance Conferences .

“Other” Sexual Offences is above average but in tolerance

- In exception based on a higher than usual volume of crimes being recorded in last 3 months
- The crime volumes recorded each month do fluctuate but the general long term trend is upwards. 40 forces have seen an upward trend. **NYP are not an outlier compared to national or MSF.**
- Forecast to continue to rise. Main themes are:
 - Using technology to get victims to send images
 - sexual assault through touching
 - police being informed of inappropriate relationships or underage sex.

Burglary Non Dwelling levels in May have been significantly lower than usual across Craven , Hambleton , Scarborough and York

NYP'S TACTICAL RESPONSE

	Property Crime (theft & damage)	Crimes against the Person
Cra Ham Rich Hgt	<ul style="list-style-type: none"> •Op HAVEN – County burglaries •Op HAWK – Craven burglaries to be supplemented by an updated Op CHECKPOINT – regional deployment x border criminals •Op FEROX – rural crime in Hamb/Rich including Landrover crime. This works with our watch schemes to have day/nights of action throughout the year 	<p>NB: Crime increases strongly linked to improved recording practices</p> <ul style="list-style-type: none"> •Op SIERRA 2 running over duration of European Football Championships – high vis patrols to deter and intervene and respond to any high risk DV •Op TATTOO targeting CSE – patrols and intervention with potential victims
Scar Rye	<ul style="list-style-type: none"> •Op SHUDDER . Targets x border criminality for burglary & theft in rural areas. Support from specialist units. Tactics include proactive stop checks . Outcome: Arrests made including one person charged with 13 offences & remanded •Op Hawk – regular deployments. •Op AMBIENCE in Castle & North Bay. Multi agency op targeting areas of town where vulnerable children & adults have been identified & supported. Homeless people located & supported, street drinking addressed & drug dealing identified & subsequently targeted by police •An Op to target shoplifting is being planned. <div style="border: 1px solid black; padding: 5px; margin-top: 5px;"> <p>Rural Crime Task Force (RTF) 60+ prevention visits & 20 prevention surgeries (property marking). Proactive patrol s supporting Op SIFT, SHUDDER, & HAWK. Op Gamekeeper conducted in the run up to and period of Appleby Fair. Engaged with travellers and residents, whilst conducting reassurance patrols. Over 200 people signed up to Community Messenger in just 2 days.</p> </div>	<ul style="list-style-type: none"> •Operation to respond to Domestic Abuse at peak reporting times e.g. weekend and sporting events, with uniform and Specialist resource working to effectively support the victim and deal positively with suspects. •Op TAUT proactive op targeting drug related violence in Scarborough. To date 13 arrests have been made. 5 persons have been charged with drug offences and remanded into custody. 2 other persons involved in the violence have been charged and also remanded into custody. •Op SIKA Filey, Whitby & Ryedale on Sat nights
York Selb	<ul style="list-style-type: none"> •Spec Ops support and Intel sharing with other forces. Short term spikes in crime linked to small numbers of (identified) offenders •Op JOYPAD and Op TANK tackle burglaries. Joypad uses Special Constables, cadets, volunteers and SNT resource - includes property marking, security checks and advice. 8% of houses checked have been found insecure. TANK is a command led initiative to proactively target those who commit burglaries. Op JELLYFISH - X border criminality in Selby, developing intelligence and sharing information with the three neighbouring forces. The new Rural Crime Task Force has been integrated with both of the Selby SNTs and has deployed alongside Op JELLYFISH. 	<ul style="list-style-type: none"> •Op ERASE & Op SAFARI continue (alcohol related violence) •Working with British Transport Police & train companies •Door staff briefings •Passive drugs dog exercises •Target problematic locations with licensing team •Dispersal powers

NYP'S TACTICAL RESPONSE

Operation Hawk

- Op Hawk is an NYP initiative to tackle travelling criminality and rural crime with the emphasis on the patrolling of our borders and targeting of vehicles and persons involved in criminal activities. In May, the Regional Crime Team (RCT) have arrested 10 offenders, recovered 7 vehicles and seized property to the value of £86,500 (Inc. Drugs, cash and stolen vehicles). The Northern Road s Crime Team (NRCT) have arrested 13 offenders, recovered vehicles and seized property to the value of £92,000. Of note::
 - RCT stopped a vehicle following an ANPR drugs marker, resulting in the passenger being arrested as wanted by METPOL. The vehicle was searched and a large amount of suspected stolen property was found value £1300 - both occupants arrested.
 - The NRCT attended and detained 2 x suspects for suspicion of burglary after intruders in an outbuilding were reported by the occupant of a Farm near Killinghall
 - The RCT were deployed to the Durham area to support Op Orlando, the investigation into a commercial burglary where a JCB was used to remove a cash machine. A pre-emptive stop on a vehicle led to an arrest and recovery of vital evidence linked to the case.
- While not committed with their primary roles Road Police Group (RPG) / Firearms Support Unit (FSU)/Dogs deploy onto Op Hawk as well as supporting local policing, successes include:
 - FSU/RPG arrested a male for kidnap and false imprisonment of a female who was found safe and well.
 - A vehicle was stopped on the A1 following a report of a drunk driver, a subsequent search found a quantity of drugs, and believed stolen watches were recovered to the value of £3700. The male was arrested.
 - Following an ANPR hit on a vehicle recently stolen in a burglary in Middlesborough RPG and Armed Response Vehicle units deployed. The vehicle was spotted near Thirsk, heading back and was stopped and 4 Cleveland nominals arrested for suspicion of burglary.
- The Rural Task Force are carrying out deployments under Op Hawk as well as their Primary role at targeting rural crime- of note:
 - The Rural Task Force and Road Crime Team attended Holmewood, Bradford following a burglary in Kirk Deighton. After an area search a vehicle was identified bearing suspect number plates. A search was conducted and the vehicle was found to have been stolen in a commercial burglary in February, within the vehicle officers locate a quadbike and 2 motorcycles that had been stolen overnight in the burglary.

Operation Checkpoint

- There has been a further multi force operation on the 17th May 2016 involving 35 NYP officers from the NRCT, Rural Task Force, RPG, FSU and Dog Section, Local Policing work alongside watch volunteers in patrolling all along our counties Northern Border.
- Throughout the operation 73 PNC vehicle checks/23 person checks were carried out, 5 vehicles seized and 4 FPN's issued. 2 persons arrested and £20,000 worth of cannabis seized, of note –An attempt was made to stop a speeding vehicle but the vehicle made off. A long pursuit followed with speeds reaching at some point 140mph. As the pursuit continued the subject vehicle collided with other road users, National Police Air Service was deployed , the vehicle stopped as it ran out of fuel. Within the vehicle were the male driver, his partner and a 3 year old child, resulting in the driver being arrested for child neglect and possession with intent to supply class b drug .

NOT PROTECTIVELY MARKED

NOTABLE INVESTIGATIONS

Update from Major Crime Unit (MCU)

Op Wild

- Reported rape York. Investigation ongoing

Op Wembley

- Murder investigation York, Feb 2016. Trial date – 25/07/16

Op Venice

- Reported stranger rape in Valley Gardens, Harrogate. Complex circumstances.

Op Tarn

- Serious assault in Sherburn in Elmet in December – 3 x offenders charged with s18 GBH, trial set for 110716

Op Shortbread

- Murder in Thirsk in November – Found guilty of Manslaughter. Sentence 11 years & 6 months

Op Neutron

- Robbery / aggravated burglary in Knaresborough – 5 x offenders from Leeds/Harrogate charged, trial set for September

Op Overcast

- Murder in York - further offender recently sentenced for drugs supply offences.

Op Hoe

- Peanut allergy manslaughter case – Guilty verdict. 6 years imprisonment

Op Quinta

- Reported stranger rape at York University. Complex circumstances.

Op Essence

- Claudia LAWRENCE

Op Wain – Cold Case Review

- Murder investigation from 2005 - This case is being managed as part of the overall cold case review function of the MCU

(no operation name given)

- Reported serious sexual assault in York. Complex circumstances

NOT PROTECTIVELY MARKED

VICTIM BASED CRIME BY DISTRICT v PREVIOUS YEARS

NO OF CRIMES	2016/17	
HAMBLETON	449	
CHANGE 16/17 v 15/16	42	10.3%
CHANGE 16/17 v 14/15	101	29.0%

NO OF CRIMES	2016/17	
RICHMONDSHIRE	233	
CHANGE 16/17 v 15/16	17	7.9%
CHANGE 16/17 v 14/15	-22	-8.6%

NO OF CRIMES	2016/17	
RYEDAILE	242	
CHANGE 16/17 v 15/16	41	20.4%
CHANGE 16/17 v 14/15	39	19.2%

NO OF CRIMES	2016/17	
HARROGATE	956	
CHANGE 16/17 v 15/16	48	5.3%
CHANGE 16/17 v 14/15	139	17.0%

NO OF CRIMES	2016/17	
SCARBOROUGH	1077	
CHANGE 16/17 v 15/16	3	0.3%
CHANGE 16/17 v 14/15	-40	-3.6%

NO OF CRIMES	2016/17	
CRAVEN	266	
CHANGE 16/17 v 15/16	-49	-15.6%
CHANGE 16/17 v 14/15	13	5.1%

NO OF CRIMES	2016/17	
YORK	1785	
CHANGE 16/17 v 15/16	-21	-1.2%
CHANGE 16/17 v 14/15	144	8.8%

- The main localised exceptions are:
 - Cycle theft in Harrogate (mainly the Town) with 25 more offences than the same period last year

NO OF CRIMES	2016/17	
SELBY	480	
CHANGE 16/17 v 15/16	-67	-12.2%
CHANGE 16/17 v 14/15	-26	-5.1%

The above is a presentation of year on year statistics. For latest local data displayed on a map for your area go to www.police.uk and enter your postcode

ASB BY DISTRICT v PREVIOUS YEARS

NO OF ASB	2016/17	
HAMBLETON	446	
CHANGE 16/17 v 15/16	59	15.2%
CHANGE 16/17 v 14/15	62	16.1%

NO OF ASB	2016/17	
RICHMONDSHIRE	205	
CHANGE 16/17 v 15/16	-51	-19.9%
CHANGE 16/17 v 14/15	-7	-3.3%

NO OF ASB	2016/17	
RYEDALE	192	
CHANGE 16/17 v 15/16	1	0.5%
CHANGE 16/17 v 14/15	17	9.7%

NO OF ASB	2016/17	
SCARBOROUGH	1095	
CHANGE 16/17 v 15/16	-27	-2.4%
CHANGE 16/17 v 14/15	-163	-13.0%

NO OF ASB	2016/17	
HARROGATE	898	
CHANGE 16/17 v 15/16	94	11.7%
CHANGE 16/17 v 14/15	-48	-5.1%

NO OF ASB	2016/17	
CRAVEN	233	
CHANGE 16/17 v 15/16	62	36.3%
CHANGE 16/17 v 14/15	7	3.1%

NO OF ASB	2016/17	
YORK	1611	
CHANGE 16/17 v 15/16	-30	-1.8%
CHANGE 16/17 v 14/15	57	3.7%

- ASB is down on the previous year

•

NO OF ASB	2016/17	
SELBY	480	
CHANGE 16/17 v 15/16	-63	-11.6%
CHANGE 16/17 v 14/15	56	13.2%

CASUALTIES KILLED OR SERIOUSLY INJURED FROM ROAD TRAFFIC COLLISIONS

		YTD	+/- Change	
Key Performance Indicator		2016	on 2015	on 2014
	Killed or Seriously Injured casualties from RTCs:	128	-5 (-4%)	
	Motorcyclist KSI casualties from RTCs:	23	5 (28%)	
	Child (= <16) KSI casualties from RTCs:	6	1 (20%)	
	Cyclist KSI casualties from RTCs:	14	-8 (-36%)	

- Please note this is provisional data for the period 1st January to 30th April 16 .
- Long term the trend in KSIs is down. No emerging issues of note.
- The provisional stats show a decrease on the previous year:
- All KSI = 7 fatal and 121 serious against 10 fatal and 123 serious in the same period in 2015.
 - Motorcycle = 1 fatal and 22 serious against 1 fatal and 17 serious in the same period in 2015.
 - Pedal cyclist = 1 fatal and 13 serious against 1 fatal and 21 serious in the same period in 2015.
 - Child KSI = 6 serious against 5 serious in the same period in 2015
- Long term trends are shown on the second graphic
- latest KSI IQuanta data up to the end of Sept 2015 shows that NYP are:
- 31 Nationally and 7 in MSF for all KSIs
- 21 Nationally and 7 in MSF for Child KSIs,

NOT PROTECTIVELY MARKED

HR OVERVIEW

Police Officers

	Apr 16	May 16	Jun 16	Jul 16	Aug 16	Sep 16	Oct 16	Nov 16	Dec 16	Jan 17	Feb 17	Mar 17	Apr 17
Officer FTE Target	1400.0	1400.0	1400.0	1400.0	1400.0	1400.0	1400.0	1400.0	1400.0	1400.0	1400.0	1400.0	1400
Actual/ Projected Num inc recr'ment	1330.00	1321.94	1329.63										

The actual number of Officers has increased by 7.69 FTE from the previous month.

14 transferees commenced with NYP on 23 May 2016.

It is planned that a further 100 officers will be recruited in the next financial year to meet the figure of 1400. This takes into account officers leaving the service to retire or for other reasons as well as current gaps.

PCSO

	Apr 16	May 16	Jun 16	Jul 16	Aug 16	Sep 16	Oct 16	Nov 16	Dec 16	Jan 17	Feb 17	Mar 17	Apr 17
PCSO Target FTE	200.0	200.0	200.0	200.0	200.0	200.0	200.0	200.0	200.0	200.0	200.0	200.0	200.0
Actual/ Projected Num inc recr'ment	184.62	184.15	180.96										

The actual number of PCSO's decreased by 3.19 FTE from the previous month towards the planned budgeted numbers.

Later in 2016 a PCSO recruitment campaign will be launched with the aim of reaching the target of 200 PCSO's, as set by the PCC/Chief Constable.

NOT PROTECTIVELY MARKED

HR OVERVIEW

Specials

	Apr 16	May 16	Jun 16	Jul 16	Aug 16	Sep 16	Oct 16	Nov 16	Dec 16	Jan 17	Feb 17	Mar 17	Apr 17
Specials Target FTE	260.00	260.00	260.00	260.00	286.00	286.00	286.00	286.00	286.00	286.00	286.00	286.00	286.00
Actual Specials FTE	184.00	184.00	193.00										

The actual number of Special Constables has increased by 9 from the previous month

The recent recruitment campaign for Special Constables closed 1 February 2016. Assessment Centres were held in March 2016 and applications progressed. 11 Special Constables commenced 21 May 2016, with further intakes planned.

Staff

	Apr 16	May 16	Jun 16	Jul 16	Aug 16	Sep 16	Oct 16	Nov 16	Dec 16	Jan 17	Feb 17	Mar 17	Apr 17
Staff Budget	1186.65	1186.65	1186.65	1186.65	1186.65	1186.65	1186.65	1186.65	1186.65	1186.65	1186.65	1186.65	1186.65
Permanent Staff FTE	911.36	897.04	895.75										
Temporary Staff FTE (not including agency)	53.80	62.41	64.59										
Agency Staff FTE	44.38	42.16	37.88										
Total Staff against budget FTE	1009.54	1001.61	998.22										

NOT PROTECTIVELY MARKED

HR OVERVIEW

The Staff Budget has been adjusted for 2016/ 2017, however needs to be ratified by Finance. Police staff roles fluctuate in accordance with organisational priorities and requirements. The approach to police staff workforce profiling is to explore opportunities where flexible resources can be utilised specifically to deliver key pieces of work.

The total number of actual Staff has decreased by 3.39 FTE from the previous month.

The number of agency staff has decreased by 4.28 FTE since the previous month:

11.55 x agency staff are in supernumerary posts.

26.33 x agency staff are backfill or interim postings against established posts (includes part time agency staff).

Volunteers

	Apr 16	May 16	Jun 16	Jul 16	Aug 16	Sep 16	Oct 16	Nov 16	Dec 16	Jan 17	Feb 17	Mar 17	Apr 17
Volun- teers	241.00	238.00	231.00										

Deployment of volunteers:-

The 231 volunteers are broken down into the following roles

1 Chief Officer – Citizens in Policing

1 - Head of Volunteering

1 - Deputy Head of Volunteering

3 - Volunteer Advisors’.

35 - Front Counter Support

145 - Volunteers are Safer Neighbourhood Support

37 – Police Cadets

9 Police Cadet Leaders

GLOSSARY

Reading the performance data

- The numbers shows performance against the previous year
- The dashboard graphic for operational crime, ASB and KSI data is an assessment of the latest month against a normal month based on the 2015/16 reporting period. The position of the needle describes the month results relative to a linear average. This allows for factors such as seasonal trends or the impact of single one off events to be explained. As the desired direction of travel can be up or down (e.g. increasing crime is negative but an increasing resolution % positive) the graphics alternate the red/green colouring accordingly.

Glossary

- ASB = Anti-Social Behaviour
- Crimes Against Society = These are crimes which do not have a “named victim” i.e.. the offence is against The Crown. These are usually (but not always) are as the direct result of police intervention/proactivity e.g a drugs operation. In North Yorkshire & City of York approx 10% of crimes are “Against Society” therefore it is important to make the clear distinction from Victim Based Crime.
- Fraud Offences = These are not included in the crime statistics as they are not reported by forces to the Home Office. Instead these crimes are passed to Action Fraud and statistics are collated by that agency
- I Grade = priority assigned by control room for an incident requiring ImmEDIATE police response
- KSI = A casualty Killed or Seriously Injured as a result of a Road Traffic Collision on a public road
- MCU = Major Crime Unit
- MO = Modus Operandi
- NPS = New PsychoaSive Substances is the official term for Legal Highs
- NTE = Night Time Economy
- OPL = Over Prescribed Limit typically the term used to describe failing a breath test
- P&CP = Police & Crime Plan document setting out the Police & Crime Commissioner’s priorities
- PCC = Police & Crime Commissioner
- PCSO = Police Community Support Officer
- PSG = Performance Steering Group is an internal meeting chaired by a Chief Officer monitoring statistics & trends
- Resolved Outcome = A crime where an offender has been dealt with through sanction or restorative justice.
- Sanction Detection = A historical method of looking at how crimes were resolved. A sanction detection includes where an offender is Charged, Cautioned, given a Penalty Notices for Disorder or Cannabis Warning or Fixed Penalty Notices, and where an offender has crimes Taken Into Consideration (TIC - see below).
- TIC = Taken Into Consideration is typically where an offender admits to further offences to avoid potentially being pursued for these at a later date.
- TTCG = Tactical Tasking & Co-ordination Group is an internal meeting which directs resources to tackle specific problems

NOT PROTECTIVELY MARKED